

# Map as a Veritable Tool in the Operation of National Youth Service Corp in Nigeria

Ajirotutu Jacob Olayinka

Rufus Giwa Polytechnic, Owo, Department of Surveying & Geo-informatics, Owo, Ondo State, Nigeria

---

**Abstract:** The study is to produce a digital map of National Youth Service Corp (NYSC) Operation Areas using AutoCAD Land Development Software to carry out: scanning, geo-referencing and vectorization from an analogue map produced by the researcher in 1996 and questionnaire surveyed on random Sampling technique to collect data about NYSC operation areas nationwide. The null hypothesis ( $H_0$ ), which stated that, there is significant relationship between the effectiveness of NYSC operation and the usage of map which was tested using Chi-square. Non-Parametric Statistical tool was rejected as the calculated value of 273.43 arrived at is higher than the critical value of 5.99. The study also revealed that some corp members miss their ways during orientation or the service year. Recommendations were made to make NYSC service more effective.

**Keywords:** NYSC, Analogue Map, Digital Map, Geo-referencing, Vectorization.

---

## 1. INTRODUCTION

NYSC is an acronym which denotes National Youth Service Corp. The Scheme was established by Law on 22nd May, 1973 by the then Military Regime under General Yakubu Gowon after a bitter 30-month civil war that ravaged the country. The said bloody civil war emerged from disunity, misunderstanding and cultural differences of Nigerians. At the end of the civil war, the Gowon administration announced a national programme of rehabilitation, re-construction and reconciliation. The necessary machinery was put in place for the actualization of the scheme [1].

After months of exhaustive deliberations and consultations, the scheme was established to strengthen the national unity and integration, foster peace among Nigerians and accelerate socio-economic development in the country. Right from the inception of the scheme, the sense of nation building, patriotism and loyal service to fatherland has been inculcated into Nigerian youths [11].

It is a culture in Nigeria that once a student graduates from the University or a polytechnic, with a degree or National Higher Diploma (HND), whose age is not above thirty years, he or she is sent to a state in Nigeria to serve the Nation. The NYSC Scheme has 3 stages: the three (3) weeks of orientation camping, the Community Development Services (done once a week), and The Place of Primary Assignments, (where each corps member is posted to after the orientation camp and where he is to serve for one year) [1], [3].

The annual enrollment figure of corps members was 2,364 at inception in 1973, 229,016 in 2014 and 244,532 as at March, 2016 [2]. As at the last count, Nigeria has 40 federal, 40 states and 62 private universities bring the total in the university categories to 142. In the polytechnic education sector, there are 25 federal, 40 states, and 32 private polytechnics bring the total to 97. This is also in addition to about 135 vocational enterprise institutions/innovative enterprise institutions (VEIs/IEIs) training centres spread across the country [2].

With each of the institutions contributing graduates for participation in the scheme, a sizeable number of Nigerian graduates in the Diaspora also travel home to take part in the compulsory national service [2].

Many studies on different aspect of National Youth Service Corp has increasingly, been on unity, posting, quality and so on [3], [4], [14]. But mapping of roads, orientation camps and secretariats has received little or no attention by the government (NYSC). The use of maps enhances both local and national development [5], [15] as noted here, the use of map will add to the performance and development of NYSC as an organization.

### 1.2 Statement of the Research Problem:

“Enter the World of Maps: You can never Miss your way” [16], but the problem faced by the researcher during the service year, when posted to a village in Kaduna State for primary assignment and NYSC could not provide a map (graphical description) to the corp member, that led to missing of road to another village, thereby, waste time and resources. This story still remain till today, many graduates still rely on drivers, bike riders and motor park descriptions for location, direction/route to the orientation camp and town of primary assignment which in most cases are not correct. As a result of this gap, then there is need for this research work.

### 1.3 Objectives of the Study:

This specific objectives of the study is to

- i. Produce digital map of NYSC operation areas,
- ii. Design a well structure database for NYSC Secretariats and orientation camps, and;
- iii. Make recommendations on how to keep the map up-to-date and making NYSC more effective.

### 1.4 The Study Area:

Nigeria is situated along the west coast of Africa, lying between latitudes 4° north of the Equator and longitudes 3° west and 14° east of the Greenwich Meridian. It shares borders with Republic of Benin in the west, Chad and Cameroon in the east, and Niger in the north. Its coast lies on the Gulf of Guinea in the south and it borders Lake Chad to the northeast. Noted geographical features in Nigeria include the Adamawa highlands, Mambilla Plateau, Jos Plateau, Obudu Plateau, the Niger River, River Benue and Niger Delta. The country has an estimated area of 923,768 sq km. The country is made up of 152,217,341 (July 2010 estimate) people from about 250 ethnic groups with diverse culture and religious backgrounds [6].

## 2. METHODOLOGY

### 2.1 Data Collection:

The study was designed to produce an interactive map for operation of NYSC in Nigeria. Data were generated from two sources: the primary and secondary.

The study population in this research work was to include all the available Federal, and State Secretariats and Orientation Camps in the country, but as a result of the wider coverage of the study area, the field survey is limited to four (4) states, these include Ondo, Ekiti, Edo and Kogi. Efforts were made to collect relevant information on other states too. This is to provide necessary information and provide basis for further research work.

The primary data were obtained by personal observation and the administration of questionnaires. Random sampling was adopted to collect data and information from those who had undergone the scheme (professionals), and those currently in the programme from the States visited. 200 questionnaires were structured on the characteristic of NYSC in the country. A total of 50, 50, 50 and 50 questionnaires were randomly selected at Ondo, Ekiti, Edo and Kogi state respectively. This was based on their closeness to the researcher. This also includes NYSC Management Staff and those currently in service in the four states visited. This is to ensure that adequate information that pictured the level of participation of these states was collected. Therefore, in all, 157 were returned, representing 78.5% of the sample size.

The secondary data involve: Analogue NYSC operation map produce by the researcher in 1996, textbooks, project dissertations, seminar papers, journals, NYSC manuals and research materials on NYSC activities in Nigeria. Useful information was also obtained from NYSC portal and the internet.

## 2.2 Image Scanning:

For the purpose of this work, the analogue NYSC operation map (Figure 1) [7], was scanned using A0 scanner [8] and stored in compact disc (CD). Thus the data files were ready to be transferred onto GIS platform for subsequent image processing.

## 2.3 Image Processing:

**Format** – the analogue NYSC operation map was scanned with good resolution to improve the image quality and saved in jpeg format in a CD.

### 2.3.1 Geo-referencing:

The geo-referencing of the raster dataset was done using HP laptop [13] with AutoCAD Land Development [12] using four points obtained from the edge of the map [(Point 1:  $2^{\circ} 00'$ ,  $4^{\circ} 00'$ ), Point 2( $14^{\circ} 00'$ ,  $2^{\circ} 00'$ ), Point 3( $14^{\circ} 00'$ ,  $14^{\circ} 00'$ ) and Point 4( $4^{\circ} 00'$ ,  $14^{\circ} 00'$ )].

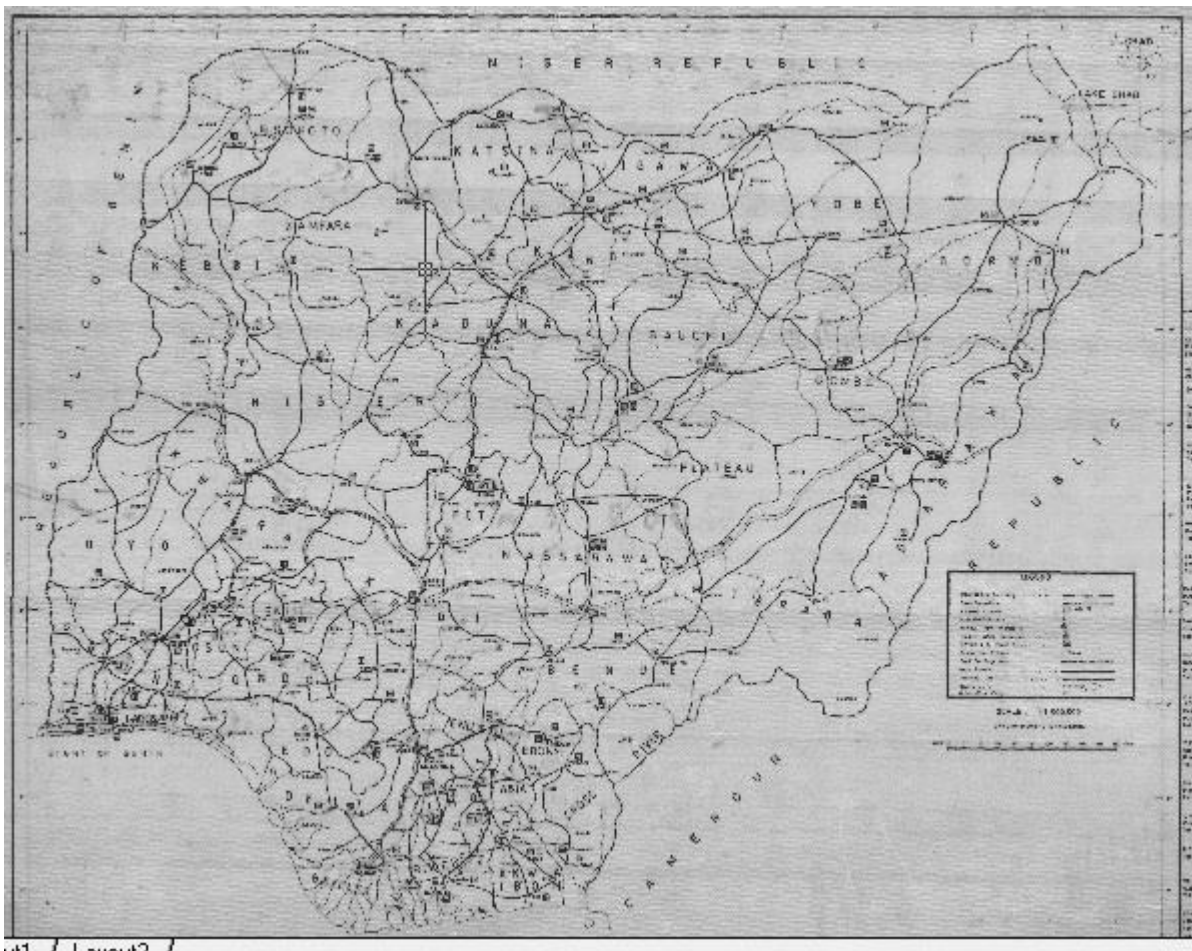


Fig. 1: Analogue NYSC Map (Source: Researcher Work, 1996)

Observational Precaution: The raster image was properly zoomed using a zoom button, to permit clearer and high accuracy of point location on the screen during geo-referencing.

### 2.3.2 Theme Formation:

Layers were formed in order to classify the features into different categories. The layers that were formed are: Point (positional object), Line (linear object) and Polygon (areal object) as shown in (Figure 2).

### 2.3.3 Vectorization

The analogue Map was digitized element by element based on the layer created for each feature and the layer to be digitized was made current before digitizing (Figure 2).

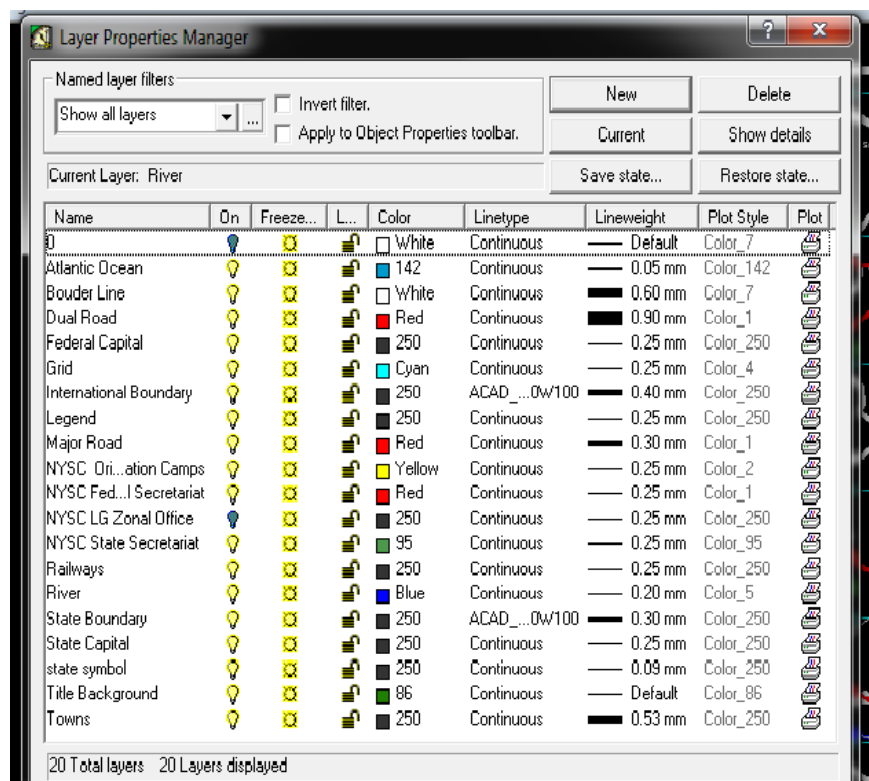


Fig. 2: Layer Properties (Source: Field work, 2017).

**Observational Precaution:** The raster image was properly zoomed to permit clearer and high accuracy of tracing during the on-screen digitizing procedure.

### 2.3.4 Data editing:

After capturing the geographical data and key-in the statistical data, checks were made to various data sets for possible errors. Zoom tool was used to check errors in the digitized map, and such were corrected using appropriate tools.

### 2.3.5 Attribute database:

The vector shape files created have automated database, which were subsequently updated to contain required data. Thus, attribute data files that were created with the shape files this was done within the software. The information processed from the questionnaires returned was now entered using these subheadings: These include name of Secretariats, shape of the features, colour and the like, as shown in Figure 2. This was saved as NYSC operation Map in a folder.

### 2.3.6 Plotting of Acquired Data:

In AutoCAD Land Development environment, data acquired from the field were added, plotted and labeled on the new map Figure 4.

## 2.4 Cartographic Design

**2.4.1 Map Design** – The systematic process of arranging and assigning meaning to elements on a map for the purpose of communicating geographic knowledge in a pleasing format [9]. Design is concerned with the graphic presentation of the information contained in the map. In designing the map the objectives, audience and subject matter were considered.

Format – NYSC Operation map was designed on scale 1:2,000,000.

**2.4.2 Symbolization** – Map symbolization is the characters, letters, or similar graphic representations used on a map to indicate an object or characteristic in the real world. According to Robinson [10], symbolization is the graphic coding of the essential characteristics, comparative significance, and relative positions that result from simplification.

In designing the map symbol, geometric symbol (circle, square, triangle, e.t.c.) and conventional symbol were used (Figure 3).

**2.4.3 Colours** – In designing the map, multi-colours were used which include: Red, Black, Green, Blue, and Yellow. Each element on the map was differentiated from one another by different colours for the purpose of clarity and for effective communication.

**Red Colour:** Red thick continuous line was used for dual carriage way/ Express Road and red thin continuous line was used to show main roads and minor roads within the country.

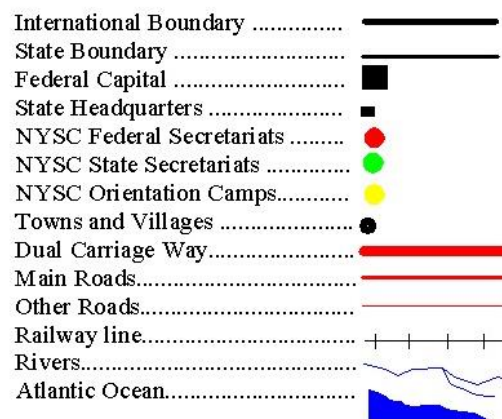
**Black Colour:** Black thick line for international boundary, while black thin line was used for state boundary and railways line, Black Square for Federal and State capitals, black circle for towns and villages.

**Green Colour:** Green circle was used to denote NYSC secretariats within the nation.

**Blue Colour:** Blue was another colour employed to depict the Atlantic Ocean, river Niger and Benue and other rivers found on the map, while light blue was used for graticules.

**Yellow Colour:** On the map, yellow circles stand for NYSC Orientation camps across the nation.

**Map embellishment:** Map embellishments was carried out where legend, scale grid, orientation and other marginal information were added to the map using appropriate tools of the software.



**Fig. 3: Symbols Design (Source Fieldwork, 2017).**

**TABLE 1 : Breakdown of the administered questionnaire**

Type of Respondents (A)	State	Total Questionnaire	Questionnaires Returned	Not Returned
Those who had served the Nation and those currently serving	Ondo	50	43	7
Those who had served the Nation and those currently serving	Ekiti	50	39	11
Those who had served the Nation and those currently serving	Edo	50	40	10
Those who had served the Nation and those currently serving	Kogi	50	35	15
	<b>Total</b>	<b>200</b>	<b>157</b>	<b>43</b>

(Source, Fieldwork, 2017).

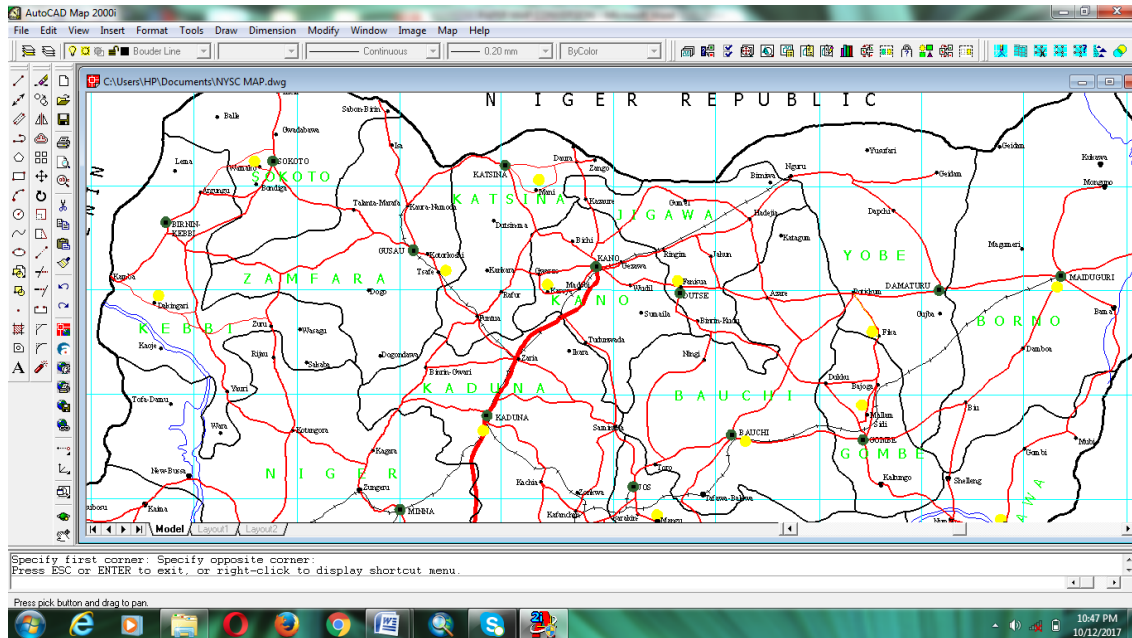
In order to analyze the data that were collected in the course of the research; both descriptive and inferential statistics were used. Tables were employed to present the magnitude of occurrences of the variables that were obtained. Chi-square was employed to test for hypothesis:

Ho: NYSC operation will be more effective with the use of map.

Hi: NYSC operation will not.

### 3. DISCUSSION OF FINDINGS

At the end of data analysis, an interactive Operation Map of NYSC in Nigeria showing all secretariats and orientation camps was produced as shown in Figure 4.



**Fig. 4: NYSC Digital Map.**

From the map, it was discovered that there is one Federal (National) Office and thirty-seven state secretariats in the country including F.C.T, while the orientation camps are thirty-seven, one in each state plus Abuja. (Appendix A & B).

In addition, different types of map could be produced from the same data. Like map displaying only orientation camps, secretariats, the road networks, and the like.

Also, it was discovered that the NYSC management actually adhere to age limit for prospective corp member whose age is not greater than thirty (30) years as seen in Table 2.

**TABLE 2: Age of Respondents as at time of NYSC**

State	< 18	20 - 30	31 - 39	40 - 49	< 50	Total
Ondo	3	40		-	-	43
Ekiti	6	40		-	-	46
Edo	3	35		-	-	38
Kogi	1	29		-	-	30
<b>Total %</b>	<b>16</b> <b>10.2%</b>	<b>141</b> <b>89.8%</b>		-	-	<b>157</b> <b>100%</b>

Furthermore, Table 3 revealed that corp members faced many challenges without the operation map as 51.6% agreed to face the problem of missing route 26.8%, waste money and the like.

**TABLE 3: Problems facing without the use of map by NYSC/Corps Member**

S/N	Factor	Respondents	Percentage (%)
1	Waste money	42	26.8
2	Waste time	6	3.8
3	Missing of route	81	51.6
4	Disappointment	19	12.1
5	exploitation	9	5.7
		<b>157</b>	<b>100</b>

Source: Field work, 2017.

TABLE 4: Is the Map requiring for effective operation of NYSC Service?

S/N	Response	No of Respondents	(%)
1	Yes	150	95.5
2	No	4	2.5
3	Not Sure	3	1.9
		<b>157</b>	<b>100</b>

Source: Field work, 2017.

### Test of Hypothesis:

The major concerned here was to validate whether relationship exists between the NYSC operation and map usage. Thus, the study postulated that:

$H_0$ : There is significant relationship between the effectiveness of NYSC operation and the usage of map.

$H_1$ : There is no significant relationship between the effectiveness of NYSC operation and the usage of map.

### Chi-square Test:

TABLE 5: Responses

Response	Observed (O)	Expected (E)	IO-EI	$IO-EI^2$	$IO-EI^2/E$
Yes	150	52.33	97.67	9539.43	182.29
No	4	52.33	48.33	2335.79	44.64
Not sure	3	52.33	49.33	2433.45	46.50
	157				273.43

$d=2$ ,  $X^2_c=273.43$ ,  $X^2 t(p0.05) = 5.99$

### Interpretation:

Since the calculated value ( $X^2_c$ ) is greater than the table value ( $X^2 t$ ) at 0.05, we conclude that there is significant difference between Yes and other responses. Therefore, we accept the  $H_0$  hypothesis that NYSC operation will be more effective with the usage of map.

Finally, the research showed that with the use of map, the service of NYSC to prospective corp will be more effective than the present situation.

## 4. RECOMMENDATIONS

Based on the results of the analysis of this work, the following are therefore recommended:

- the Federal government should fund the programme properly including the aspect of map production,
- the map should be made available to prospective corp member together with call-off letter to avoid difficulty encountered during orientation and primary assignment, and;
- For the map to be readily available, NYSC should continue to up-date the map as at when due since is digital.

## 5. CONCLUSION

Considering the roles play by map especially in the administration of NYSC in displaying what is where and how to get there, it is on this premise that the study having produce a digital map, that displays the location of secretariats and orientation camps nationwide, conclude that for effectiveness in the discharge of NYSC duties for human and material resources, this map is inevitable.

## REFERENCES

- [https://en.wikipedia.org/wiki/National\\_Youth\\_Service\\_Corps](https://en.wikipedia.org/wiki/National_Youth_Service_Corps) Accessed 15<sup>th</sup> March, 2017.
- <https://newsherald.com.ng> Accessed 25<sup>th</sup> July, 2017.

- [3] <https://www.projectwriters.ng/tag/nysc-and-national-integration-in-nigeria/> Accessed 15<sup>th</sup> March, 2017.
- [4] [www.projectclue.com/.../design-and-implementation-of-an-nysc-posting-system](http://www.projectclue.com/.../design-and-implementation-of-an-nysc-posting-system) Accessed 15<sup>th</sup> March, 2017.
- [5] Adalemo, I.A. (1982) Cartography and National Development in Ayeni O.O. (ed). Mapping and National Development in Nigeria. Special Publication NCAP 1, Nigerian Cartographic Association, Lagos, pp 3-12.
- [6] <https://www.thoughtco.com/geography-of-nigeria> Accessed 15<sup>th</sup> March, 2017.
- [7] Ajirofutu, J.O. (1996) Analogue Map of Nigeria showing Orientation Camps and State Secretariats, being an unpublished work presented to NYSC Kaduna State.
- [8] A0 Colortrac SmartLF Ci 40 Scanner; Rufus Giwa GIS laboratory.
- [9] McGraw Hill (2003): Dictionary of Scientific & Technical Terms, 6E, by The McGraw-Hill Companies, Inc.
- [10] Robinson, A.H; Morrison, J.L; Muchreke, P.C; Kimerling, A.J. and Gunptill, S.C. (1995): Elements of Cartography, New York, John Wiley and Sons, 6<sup>th</sup> edn.
- [11] <https://awajis.com/nysc/history-of-nysc/> Accessed 15<sup>th</sup> March, 2017.
- [12] AutoCAD Land Development Software
- [13] HP ProBook 6460b Laptop
- [14] <http://nysc.gov.ng/> Accessed 25<sup>th</sup> July, 2017.
- [15] Balogun, O.Y. (2003) Enter the World of Maps: You can never Miss your way. An inaugural lecture delivered at the University of Lagos.

## APPENDIX - A

### ADDRESSES OF NYSC ORIENTATION CAMPS:

9	STATE CODE	ADDRESS
1.	ABIA (AB)	NYSC Permanent Orientation Camp, Umunna, Bende Local Government Area, Abia State
2.	ADAMAWA (AD)	NYSC Permanent Orientation Camp, Old Gongola Brewery Damare Village Along Lapondo Road, Girei LGA, Adamawa State.
3.	AKWA IBOM (AK)	NYSC Permanent Orientation Camp, Ikot Itie Udung, Nsit Atai Local Government Area, Akwa Ibom State.
4.	ANAMBRA (AN)	NYSC Permanent Orientation Camp, Progressive Senior Secondary School, Umunya, Oyi Local Government Area, Anambra State.
5.	BAUCHI (BA)	Adult and Non-Formal Education Institute, kangere, KM 16, Bauchi - Gombe Road, Bauchi.
6.	BAYELSA (BY)	Kaiama Grammar School, Kaiama, Kolokuma/Opokuma L.G.A Kaiama Grammar School, Kaiama, Kolokoma-Opokuma Local Government Area, Bayelsa State.
7.	BENUE (BN)	NYSC Permanent Orientation Camp, Wannune, Tarka Local Government Area, Kilometer 35 Makurdi Gboko Road, Benue State.
8.	BORNO (BO)	NYSC Permanent Orientation Camp, Biu Road, Maiduguri LGA, Maiduguri, Borno State.
9.	CROSS RIVER (CR)	NYSC Permanent Orientation Camp, Obubra, Obubra Local Government Area, Cross River State.
10.	DELTA (DT)	NYSC Permanent Orientation Camp Former Martins TTC, Issele-Uku, Aniocha North L.G.A. Delta State
11.	EBONYI (EB)	NYSC Permanent Orientation Camp, Macgregor College, Afikpo Local Government Area, Ebonyi State.
12.	EDO (ED)	Okada Grammar School, Okada, Ovia North-East Local Government Area, Edo State.
13.	EKITI (EK)	NYSC Permanent Orientation Camp, Ise-Orun/Emure Local Government Area, Ekiti State.
14.	ENUGU (EN)	NYSC Permanent Orientation Camp, Awgu Local Government Area, Enugu State.
15.	FCT (ABUJA) (FC)	NYSC Permanent Orientation Camp, Kubwa, Bwari Area Council, FCT.
16.	GOMBE (GM)	NYSC Permanent Orientation Camp, Kilometer 27, Mallam Sidi, Kwame Local Government Area, Gombe State.
17.	IMO (IM)	NYSC Permanent Orientation Camp, Umudi Nkwerre Local Government Area, Imo State.
18.	JIGAWA (JG)	NYSC Permanent Camp, opposite Army Barrack, Fanisua Dutse Local Government Area, Jigawa State



19.	KADUNA (KD)	NYSC Permanent Orientation Camp, Kaduna – Abuja Road, Kaduna State.
20.	KANO (KN)	NYSC Permanent Orientation Camp, Kusala Dam, Karaye, Karaye Local
21.	KATSINA (KT)	Youth Multi-purpose Centre/ NYSC Permanent Orientation Camp, Mani Road, Katsina State.
22.	KEBBI (KB)	NYSC Temporary orientation Camp, Government Science College, Dakingari Local Government Area, Kebbi State
23.	KOGI (KG)	NYSC Permanent Orientation Camp, Asaya, Kabba Local Government Area, Kogi State.
24.	KWARA (KW)	NYSC Permanent Orientation Camp, Yikpata, Edu Local Government Area, Kwara State
25.	LAGOS (LA)	NYSC Permanent Orientation Camp, Iyana Ipaja, Agege, Lagos State.
26.	NASSARAWA (NS)	Magaji Dan-Yamusa Permanent Orientation Camp, Keffi, Nasarawa State.
27.	NIGER (NG)	NYSC Permanent Orientation Camp, (Former Abubakar, Dada Senior Secondary School), Paiko, Niger State.
28.	OGUN (OG)	NYSC Permanent Orientation Camp, Ikenne Road, Sagamu Local Government Area, Sagamu, Ogun State.
29.	ONDO (OD)	NYSC Permanent Orientation Camp, Ikare-Akoko Local Government Area, Ondo State.
30.	OSUN (OS)	NYSC Permanent Orientation Camp, Aisu College Hospital Road, Ede North Local Government Area, Ede, Osun State.
31.	OYO (OY)	Government Technical College, Iseyin Local Government Area, Iseyin, Oyo State.
32.	PLATEAU (PL)	NYSC Permanent Orientation Camp, Mangu, Mangu Local Government Area, Plateau State.
33.	RIVERS (RV)	NYSC Permanent Orientation Camp, Nonwa-Gbam Tai Local Government Area, Rivers State.
34.	SOKOTO (SO)	Government Technical College Farfaru, Farfaru Local Government Area, Sokoto State.
35.	TARABA (TR)	Government College, Jalingo, Jalingo Local Government Area Taraba State.
36.	YOBE (YB)	NYSC Permanent Orientation Camp, Fika, Fika Local Government Area, Yobe State.
37.	ZAMFARA (ZM)	NYSC Permanent Orientation Camp, Beside FRSC Office, Tsafe Local Government Area, Zamfara State.

**ADDRESSES OF NATIONAL OFFICE AND STATE SECRETARIATS:**

<b>NATIONAL HEAD OFFICE</b>		
Plot 416, Tigris Crescent off Aguyi Ironsi Street Maitama, P.M.B. 138, Garki, Abuja.		
S/N	STATE	ADDRESS
1.	ABIA	NYSC Secretariat: St. Finbarr's Road, P.M.B 7225, Umuahia. Tel: 08033908159; Email: <a href="mailto:nyscabia2013@gmail.com">nyscabia2013@gmail.com</a>
2.	ADAMAWA	NYSC NYSC Secretariat Fed. Govt. Sec, P.M.B 2252, Jimeta-Yola. Tel: 07034050120; Email: <a href="mailto:adamawanysc@yahoo.com">adamawanysc@yahoo.com</a>
3.	AKWA IBOM	NYSC NYSC Secretariat Federal secretariat, P.M.B 1087, Uyo; Tel: 08033364820; Email: <a href="mailto:nysc_akwaibom@yahoo.com">nysc_akwaibom@yahoo.com</a> , <a href="mailto:nyscakwaibom13@gmail.com">nyscakwaibom13@gmail.com</a>
4.	ANAMBRA	NYSC NYSC Secretariat 12 Okpora Street, P.M.B 4042, Amawbia, Awka. Tel: 08033481093, 08073971386 Email: <a href="mailto:anambranysc@gmail.com">anambranysc@gmail.com</a>
5.	BAUCHI	NYSC Secretariat Turaki Abdu Road, Fadamar Mada. PMB 85, Bauch, Bauchi State. Tel: 07068249950 Email: <a href="mailto:nyscsectbauchi@gmail.com">nyscsectbauchi@gmail.com</a>
6.	BAYELSA	NYSC Secretariat Block 7, Flat 1-4 Phase II, Civil Service/ FRSC Road , Yenogoa. Tel: 08035509109 Email: <a href="mailto:nyscbayelsastate@gmail.com">nyscbayelsastate@gmail.com</a>
7.	BENUE	NYSC Secretariat: Railway Bye-pass, P.M.B 2358, Makurdi. Tel: 08034503113 Email: <a href="mailto:nyscbenue@gmail.com">nyscbenue@gmail.com</a> , <a href="mailto:nyscbenue@yahoo.com">nyscbenue@yahoo.com</a>
8.	BORNO	NYSC Secretariat Kashim Ibrahim Road, P.M.B 1124, Maiduguri. Tel: 07031855819 Email: <a href="mailto:statenyscborno@yahoo.com">statenyscborno@yahoo.com</a>
9.	CROSS RIVER	NYSC Secretariat KM 5, Muritala Muhamed Way Ikot Ansa, PMB 1148, Calabar. Tel: 08035816503 Email: <a href="mailto:coordnysccrs@hotmail.com">coordnysccrs@hotmail.com</a>
10.	DELTA	NYSC Secretariat Federal Secretariat, P.M.B 5004, Asaba. Tel: 08065813245 Email: <a href="mailto:nyscdelta@yahoo.com">nyscdelta@yahoo.com</a>
11.	EBONYI	NYSC Secretariat: 17 Nkwerre Street, G.R.A, Abakaliki. Tel: 08033384547 Email: <a href="mailto:nysc.ebonyi@yahoo.com">nysc.ebonyi@yahoo.com</a>
12.	EDO	NYSC Secretariat : 2 Red Cross Road off Ikpokpan Road, off Sapele Road, GRA Benin City.Tel: 08033071494 Email: <a href="mailto:nysc_edo@yahoo.com">nysc_edo@yahoo.com</a>
13.	EKITI	NYSC Secretariat: Kilometer 2, Iyin Road, P.M.B 5302, Ado- Ekiti. Tel: 08037752927 Email: <a href="mailto:ekitikopamails@yahoo.com">ekitikopamails@yahoo.com</a>

14.	ENUGU	NYSC Secretariat 2 Abakaliki Road G.R.A, P.M.B 1293, Enugu. Tel: 08022612333 Email: <a href="mailto:nysc.enugu@yahoo.com">nysc.enugu@yahoo.com</a>
15.	FCT (ABUJA)	NYSC Secretariat: No. 25 Ndola Crescent, off Michael Okpara Street (opposite Ibro Hotel) Zone 5, Wuse, Abuja. Tel: 08037870856. Email: <a href="mailto:fctnysc@yahoo.com">fctnysc@yahoo.com</a>
16.	GOMBE	NYSC Secretariat, along F.M.C/ Ashaka Road, P.M.B. 036, Gombe, Gombe State. Tel: 08033740559. Email: <a href="mailto:gombe.nysc@yahoo.com">gombe.nysc@yahoo.com</a>
17.	IMO	NYSC Secretariat: Mbanjo Street Aladinma Housing Estate, Owerri. Tel: 08036777000. Email: <a href="mailto:nyscimo2@yahoo.com">nyscimo2@yahoo.com</a>
18.	JIGAWA	NYSC Secretariat Kigawa Road, P.M.B 7049, Dutse. Tel: 08033120599. Email: <a href="mailto:nyscjigawa@yahoo.com">nyscjigawa@yahoo.com</a>
19.	KADUNA	NYSC Secretariat: Unguwa Rimi. P.M.B 2201, Kaduna. Tel: 08037012504. Email: <a href="mailto:nysckadunasec@gmail.com">nysckadunasec@gmail.com</a>
20.	KANO	NYSC Secretariat Gwarzo Road, P.M.B 3137, Kano. Tel: 07037146344. Email: <a href="mailto:nysckano@yahoo.com">nysckano@yahoo.com</a> , <a href="mailto:nysckano@gmail.com">nysckano@gmail.com</a>
21.	KATSINA	NYSC Secretariat Federal Secretariat Complex Katsina. P.M.B 2034, Katsina. TEL: 08037612007. Email: <a href="mailto:nysckt@gmail.com">nysckt@gmail.com</a>
22.	KEBBI	NYSC Secretariat 4 Patrick Aziza Road, P.M.B 1043, Birnin Kebbi. Tel: 08064126789. Email: <a href="mailto:nysckebbi@yahoo.com">nysckebbi@yahoo.com</a>
23.	KOGI	NYSC State Secretariat Lokoja- Okene Road Lokongoma Phase 1, P.M.B. 1046, Kogi State.Tel: 08065553353. Email: <a href="mailto:nysckogistate@gmail.com">nysckogistate@gmail.com</a>
24.	KWARA	NYSC Secretariat: Ahmadu Bello Way, P.M.B 1512, Ilorin. Tel: 07030274911. Email: <a href="mailto:nysckwarastate@gmail.com">nysckwarastate@gmail.com</a>
25.	LAGOS	NYSC Secretariat: Old Census Office Babs Animashun Street , Surulere Lagos. Tel: 08037103033. Email: <a href="mailto:nysclagos@gmail.com">nysclagos@gmail.com</a>
26.	NASSARAWA	NYSC Secretariat: 26 Makurdi Road, P.M.B 31, Lafia. Tel: 08023630991. Email: <a href="mailto:nysc_nasarawa@yahoo.com">nysc_nasarawa@yahoo.com</a> .
27.	NIGER	NYSC Secretariat Bosso Road, P.M.B 83, Minna. Tel: 07032804963. Email: <a href="mailto:nyscnigerstate@yahoo.com">nyscnigerstate@yahoo.com</a>
28.	OGUN	NYSC Secretariat Fed. Govt. Secretariat, P.M.B 2093, Abeokuta. Tel: 08033316122. Email: <a href="mailto:nysc_ogun@yahoo.com">nysc_ogun@yahoo.com</a>
29.	ONDO	NYSC Secretariat Fed. Govt. Secretariat Complex, P.M.B 718, Akure. Tel: 08055949808. Email: <a href="mailto:ondostatenysc@yahoo.com">ondostatenysc@yahoo.com</a>
30.	OSUN	NYSC Secretariat New Ikirun road, P.M.B 4370, Oshogbo. Tel: 08036142478. Website: <a href="http://www.nyscosun.org">www.nyscosun.org</a> Email: <a href="mailto:nyscosunstate@hotmail.com">nyscosunstate@hotmail.com</a>
31.	OYO	NYSC Secretariat: Former 2, Mech. Drive, P.M.B 5500, Ibadan. Tel: 08035399787. Email: <a href="mailto:oyonysc@gmail.com">oyonysc@gmail.com</a>
32.	PLATEAU	NYSC Secretariat: Old Miango Road, Kufan Opp.Chindi Hotel, P.M.B 2258, Jos. Tel: 08067946462. Email: <a href="mailto:plateauofficialnysc@gmail.com">plateauofficialnysc@gmail.com</a>
33.	RIVERS	NYSC Secretariat: 40 Ikwerre Road, P.M.B 5210, Port Harcourt. Tel: 08036661252. Email: <a href="mailto:nyscriversstate@gmail.com">nyscriversstate@gmail.com</a>
34.	SOKOTO	NYSC Secretariat Birnin Kebbi Road, Sokoto. Tel: 08027820338. Email: <a href="mailto:nyscsokotostate@gmail.com">nyscsokotostate@gmail.com</a>
35.	TARABA	<b>TARABA</b> State Secretariat: NYSC Secretariat 118 Hammaruwa way, PMB 1058 Jalingo. Tel: 08036465379. Email: <a href="mailto:nysctarabastate@gmail.com">nysctarabastate@gmail.com</a>
36.	YOBE	NYSC Secretariat State secretariat Phase 1, P.M.B 1026, Damaturu. Tel: 08082056136. Email: <a href="mailto:nyscyobe13113@gmail.com">nyscyobe13113@gmail.com</a>
37.	ZAMFARA	NYSC Secretariat Sokoto Road, Gada Biyu, P.M.B 1026, Gusau. Tel: 08035601633. Email: <a href="mailto:nysc_zamfara@yahoo.com">nysc_zamfara@yahoo.com</a>